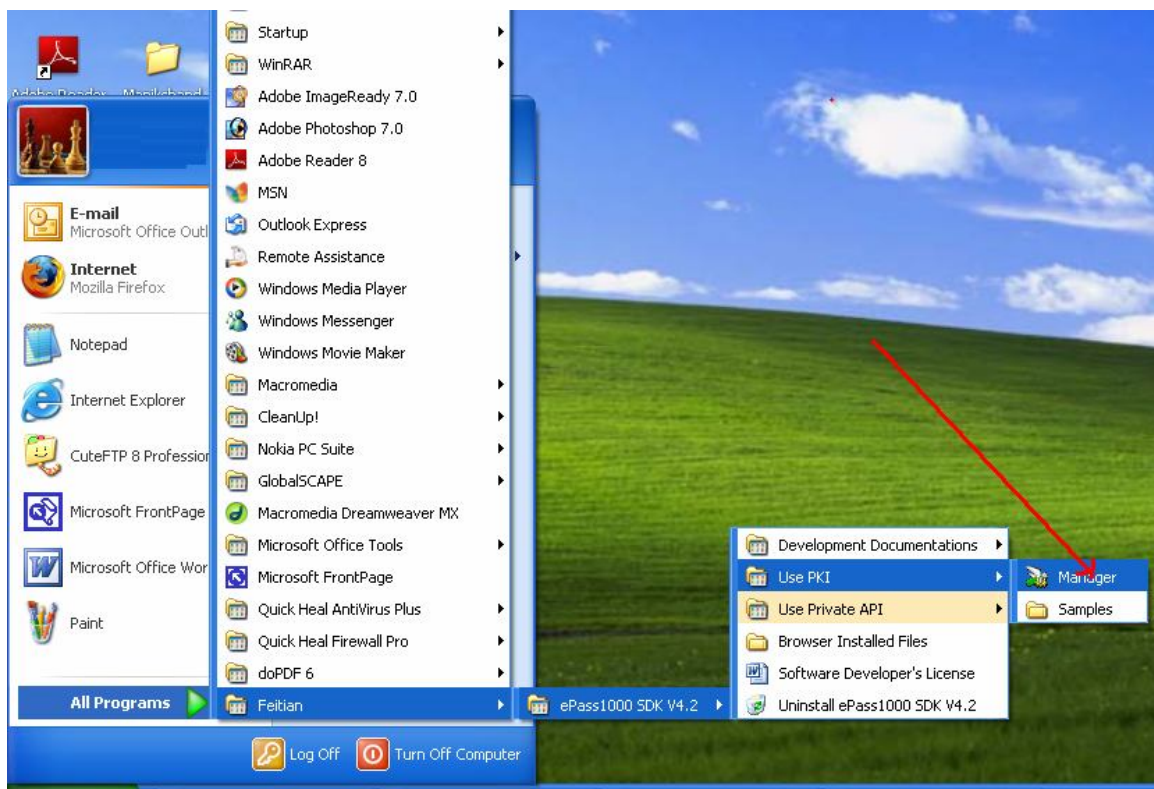
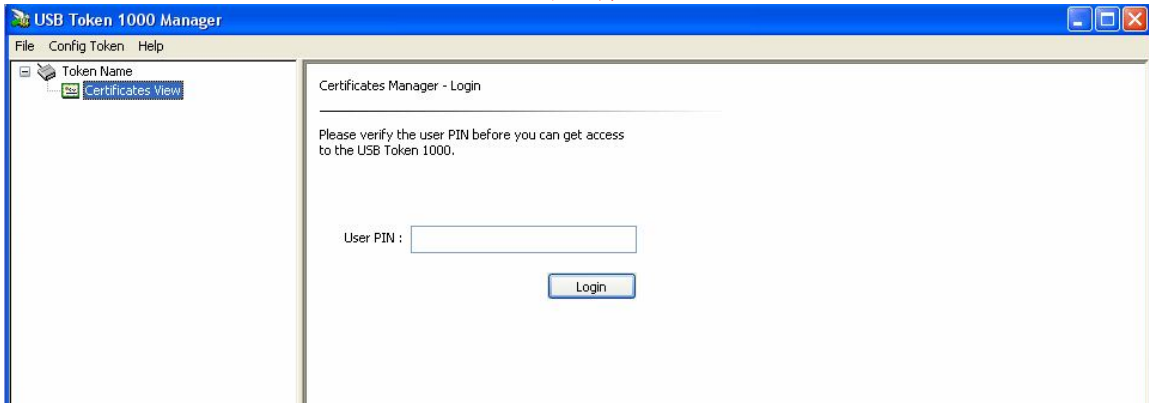


How to view or verify your DSC from Etoken?

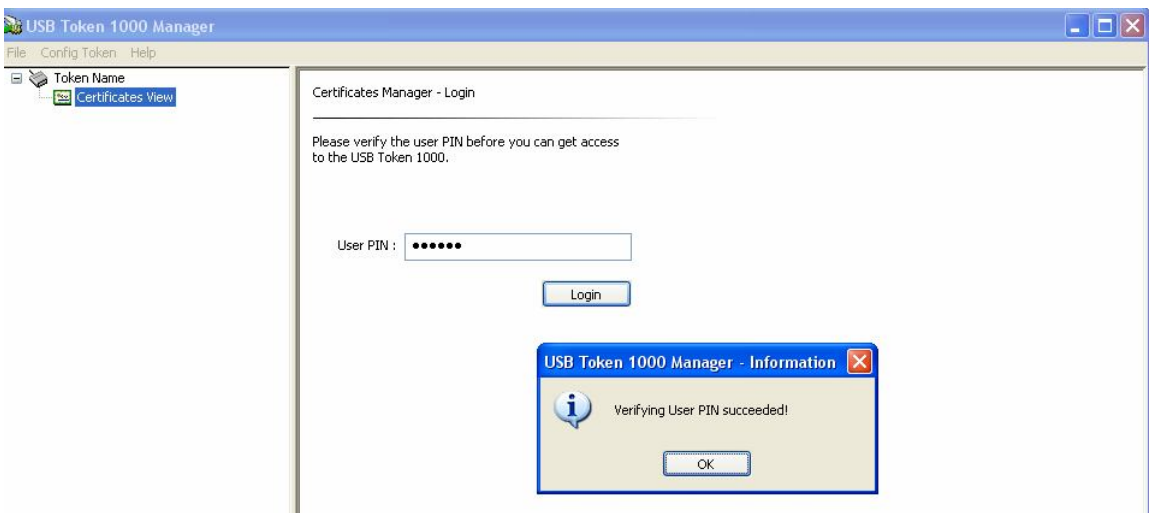
- 1) After you install the Epass1000 Driver” from the CD or email.
- 2) Insert your Etoken to USB drive.



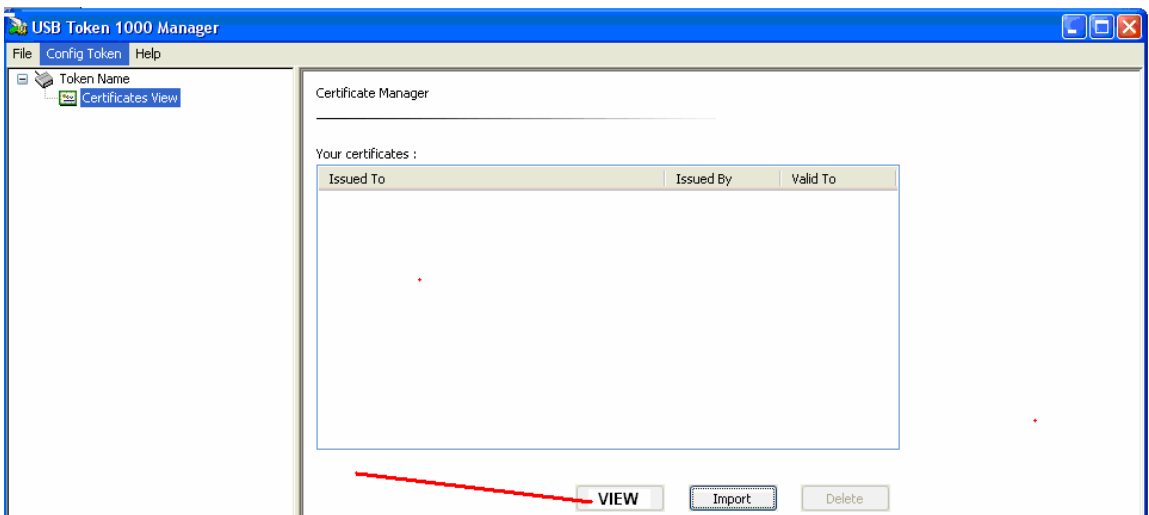
- 3) Go to **START** and select the **Fetian > Epass1000SDK v4.2> USE PKI > Manager**
Click “**Manager**”



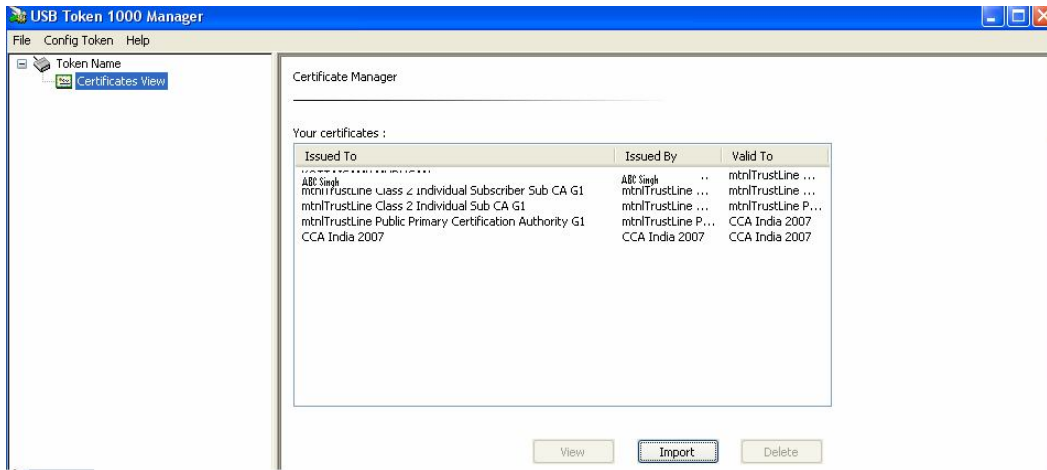
4) Select “Certificate View” and enter USER PIN as 123456 or provided.



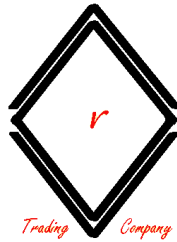
5) Click Login and OK



6) Select “VIEW”



7) You may view your DSC details.



Value Added Research Trading Company®
Regd. Office : 33-34, Girja Chowk, Purnea – 854 301, Bihar, India.
Tel + 91 95 04753353 / 93 34401070, Phone 06454 240004 /5,
SMS- VARTC msg to 567678080, E-mail: dsc@vartc.com Website : www.vartc.com

[AN ISO 9001:2008 Certified Company]

Manual No. DSC/04/2009